
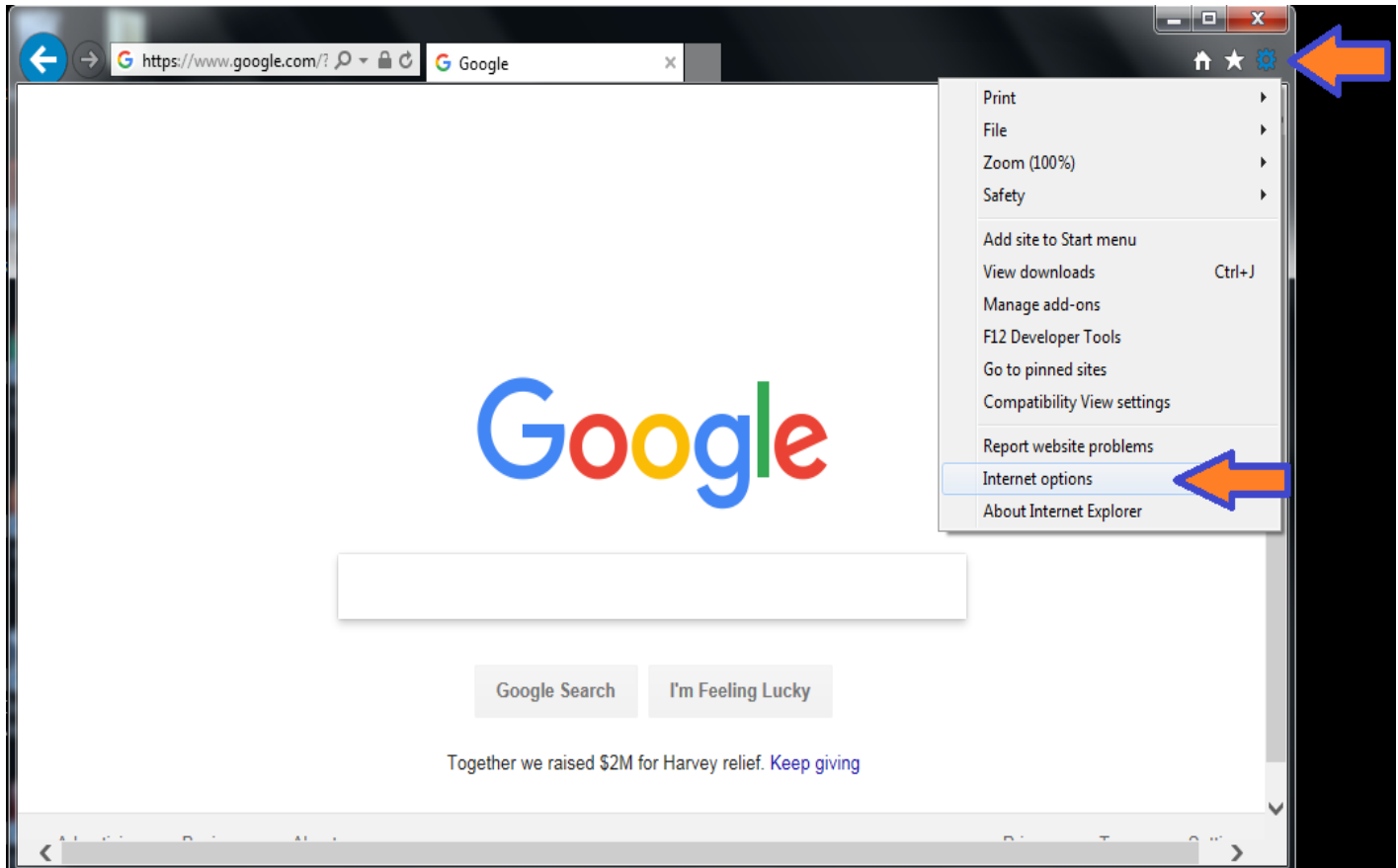


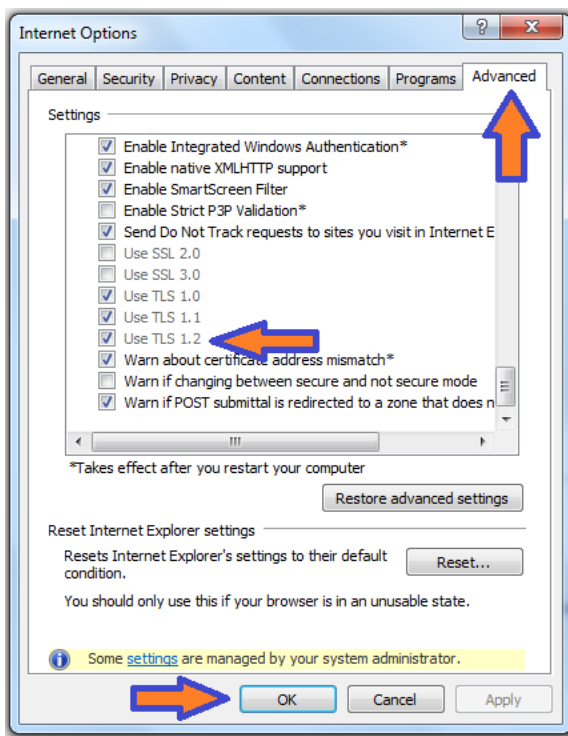
**\*\*Setting your Browser up on TLS 1.2 \*\***

## **Microsoft Internet Explorer**

1. Open **Internet Explorer**
2. Click on **Tools**  , then **Internet Options**




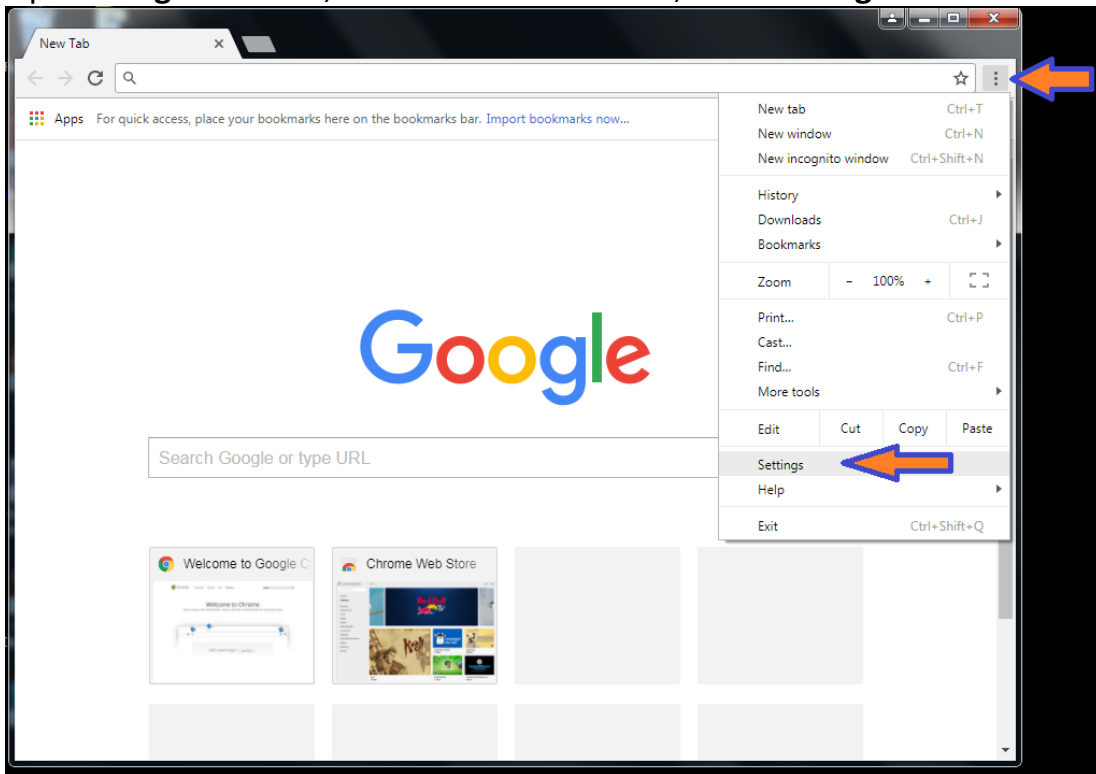
3. Click the **Advanced** tab, scroll down to **Security** category at the bottom, manually check the option box for **Use TLS 1.2** , click **OK**



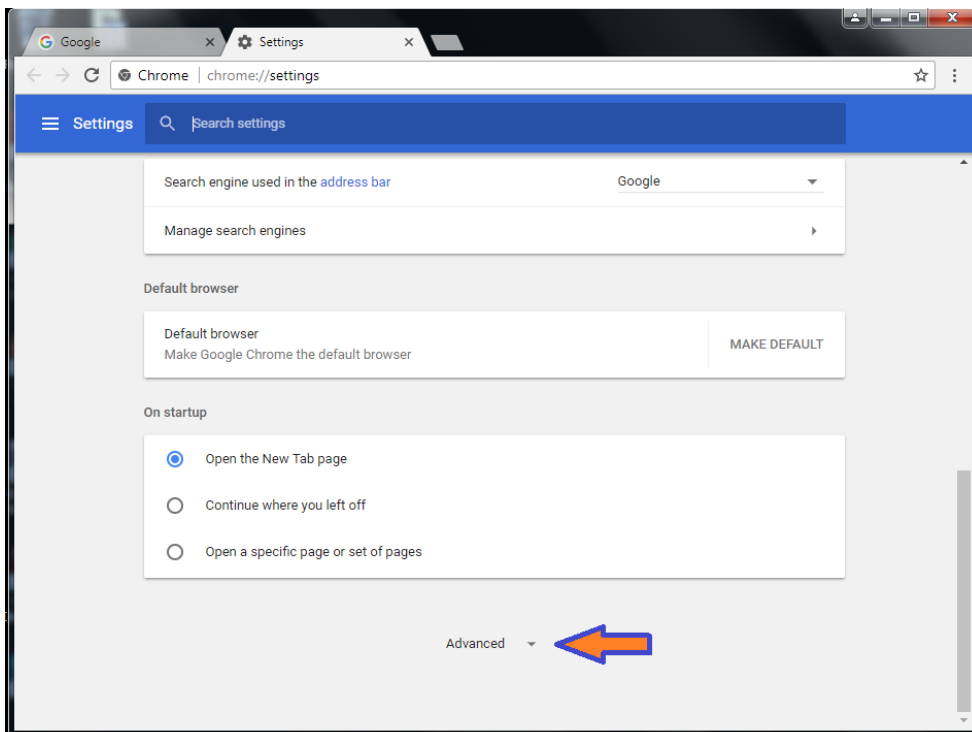
4. Close your browser and restart Internet Explorer

# Google Chrome

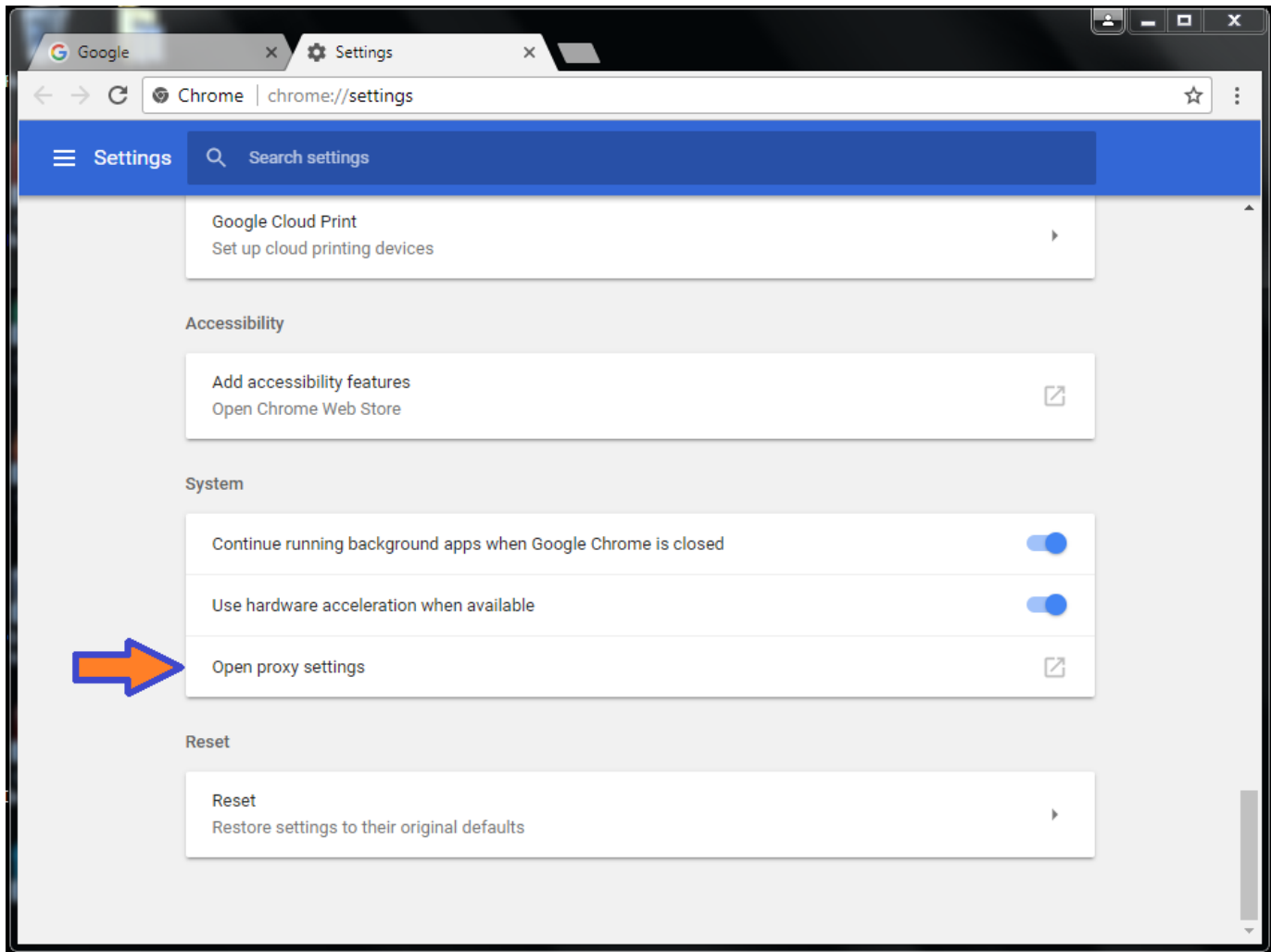
1. Open **Google Chrome**, Click the **Menu Bar** , Click **Settings**



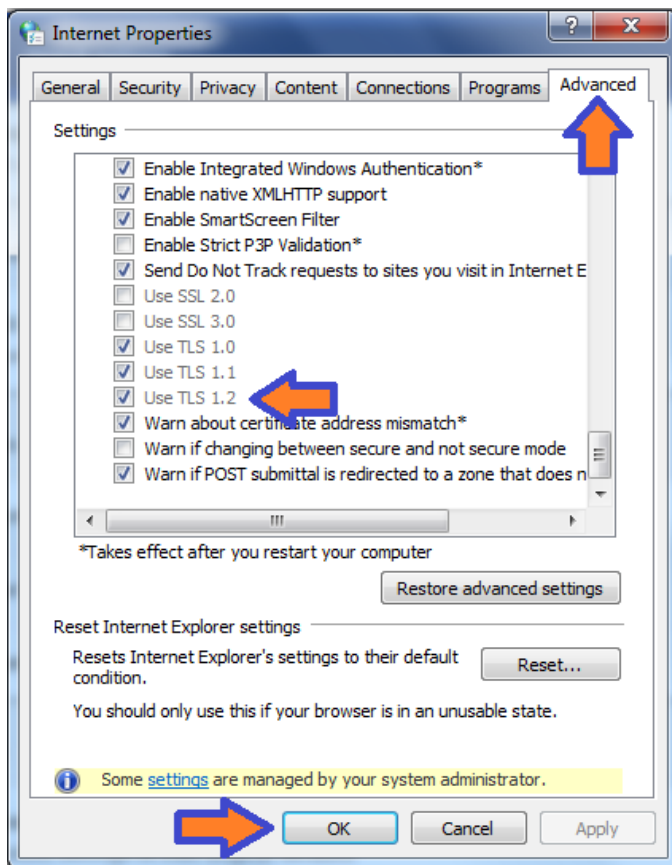
2. Scroll all the way down and click **Advanced**



3. Scroll down to the **System** section and click on **Open proxy settings**



4. Select the **Advanced** tab, scroll down to **Security** category, manually check the option box for **Use TLS 1.2**, click **OK**



5. Close your browser and restart Google Chrome

## Apple Safari

There are no options for enabling SSL protocols. If you are using Safari version 7 or greater, TLS 1.1 and TLS 1.2 are automatically enabled.

## Mozilla Firefox

For assistance with Mozilla Firefox, please contact our E-Commerce Department at 303.963.1333